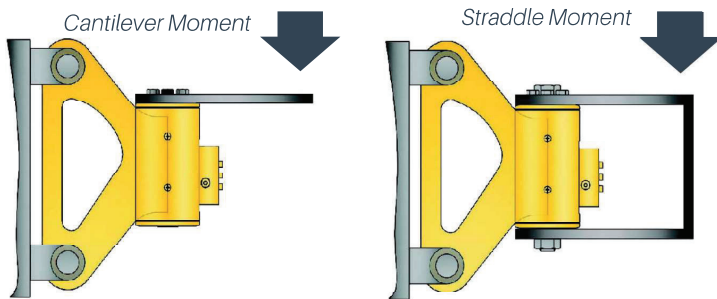
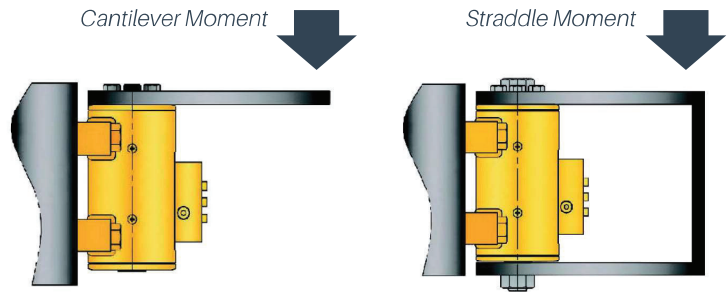


Mounting Options

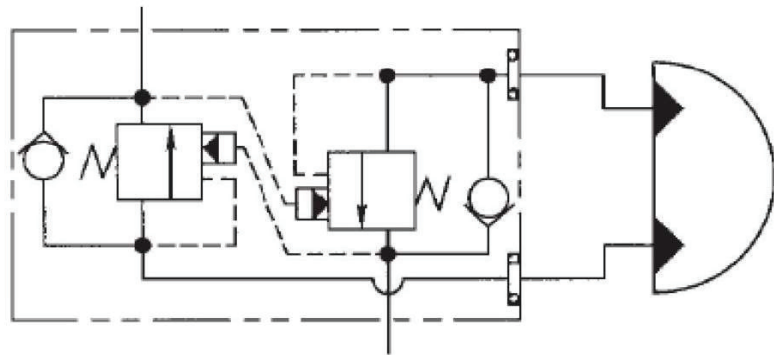
STANDARD Foot Mounting



OPTION Clevis Mounting

Valve Configurations

HYDRAULIC SCHEMATIC OF Optional Counterbalance Valve



Mounted Counterbalance valves prevent rotation in the event of a hydraulic line failure, control rotation when loads go over center, and protect the rotary actuator against excessive torque loads.

Raw material is aluminum, the valve blocks are bolted to a flat mounting pad on the rotary actuator housing.

Three bolts secure the valve block to the rotary actuator.

Please look at dimension page for valve location.

The pilot ratio is 3:1 and the valves are set to relieve at 3300 psi \pm 300 psi (228 bar \pm 21 bar).